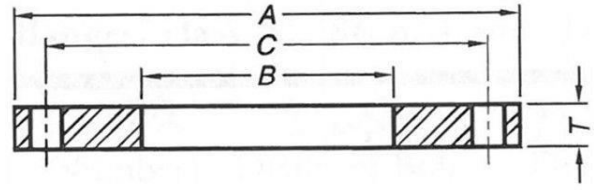
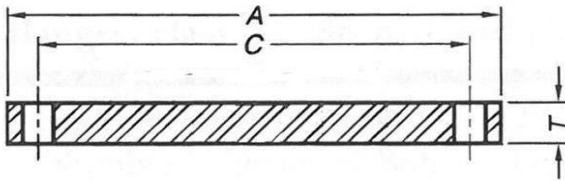


**TABLE 5 AWWA C207 CLASS E RING & BLIND FLANGES**



Nominal Pipe Size	O.D. Flange	Thickness		Bore	Drilling			Approx. Weight per Piece (LBS)	
		Slip On	Blind		Diam. of Bolt Circle	Diam. of Bolt Holes	Number of Bolts Holes	Slip On	Blind
NPS	A	T	T	B	C				
4	9	1.125	1.125	4.57	7.5	0.75	8	14	20
5	10	1.188	1.188	5.66	8.5	0.875	8	16	26
6	11	1.313	1.313	6.72	9.5	0.875	8	20	35
8	13.5	1.5	1.5	8.72	11.75	0.875	8	33	61
10	16	1.563	1.563	10.88	14.25	1	12	44	89
12	19	1.75	1.75	12.88	17	1	12	71	141
14	21	1.875	1.875	14.19	18.75	1.125	12	94	184
16	23.5	2	2	16.19	21.25	1.125	16	120	246
18	25	2.125	2.125	18.19	22.75	1.25	16	127	296
20	27.5	2.375	2.375	20.19	25	1.25	20	168	400
22	29.5	2.5	2.5	22.19	27.25	1.375	20	189	484
24	32	2.625	2.625	24.19	29.5	1.375	20	234	598
26	34.25	2.75	2.75	26.19	31.75	1.375	24	270	718
28	36.5	2.75	2.75	28.19	34	1.375	28	297	815
30	38.75	2.875	2.875	30.19	36	1.375	28	344	961
32	41.75	3	3	32.19	38.5	1.625	28	422	1163
34	43.75	3	3.05	34.19	40.5	1.625	32	441	1299
36	46	3.125	3.209	36.19	42.75	1.625	32	502	1511
38	48.75	3.125	3.394	38.19	45.25	1.625	32	580	1795
40	50.75	3.25	3.533	40.19	47.25	1.625	36	626	2025
42	53	3.375	3.695	42.19	49.5	1.625	36	701	2309
44	55.25	3.375	3.857	44.19	51.75	1.625	40	747	2715
46	57.25	3.438	3.997	46.19	53.75	1.625	40	794	2813
48	59.5	3.5	4.159	48.19	56	1.625	44	858	3276
50	61.75	3.5	4.327	50.19	58.25	1.875	44	887	3671

52	64	3.625	4.489	52.19	60.5	1.875	44	982	4091
54	66.25	3.75	4.651	54.19	62.75	1.875	44	1083	4542
60	73	3.875	5.116	60.19	69.25	1.875	52	1313	6066
66	80	4.25	5.601	66.19	76	1.875	52	1736	7976
72	86.5	4.375	6.066	72.19	82.5	1.875	60	2005	10099
78	93	4.75	.....	78.19	89	2.125	64	2374	.....
84	99.75	4.75	.....	84.19	95.5	2.125	64	2719	.....
90	106.5	5.125	.....	90.19	102	2.438	68	3197	.....
96	113.25	5.125	.....	96.19	108.5	2.438	68	3613	.....
102	120	5.5	.....	102.19	114.5	2.688	72	4206	.....
108	126.75	5.5	.....	108.19	120.75	2.688	72	4700	.....
114	133.5	5.875	.....	114.19	126.75	2.938	76	5395	.....
120	140.25	5.875	.....	120.19	132.75	2.938	76	5972	.....
126	147	6.25	.....	126.19	139.25	3.188	80	6775	.....
132	153.75	6.25	.....	132.19	145.75	3.188	80	7442	.....
138	160.5	6.75	.....	138.19	152	3.438	84	8517	.....
144	167.25	6.75	.....	144.19	158.25	3.438	84	9295	.....

**Notes:**

\*Pressure rating at atmospheric temperature is 275 psi. These flanges have the same OD and drilling as ANSI/ASME B16.1 class 125 cast-iron flanges. In sizes 24in. and smaller, they also match ANSI/ASME B16.5 150-psi standard for steel flanges.

Dimensions are in inches. Weights are in pounds.